

We don't want to do this any more...

...we don't want to sell you an old generation beam clamp even if you can get it from our production facilities.

This is the old die-cast beam clamp:



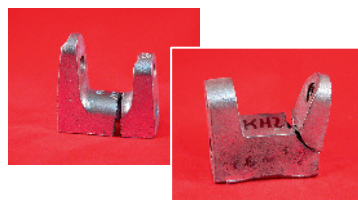
But if you still wish to install the old one, you and your employees should ensure that it is tightened with care: **Turn the screw roughly a half to a full turn!**

This is prescribed by the VdS and FM for the installation of this clamp type. For all manufacturers, with no exceptions!

Without accusing anyone of anything, is this really a good idea in practice?

Generally, the formula muscle power x instinct comes into play!

Die-cast items are unforgiving! Die-cast items cannot stretch. When is it secure, when is it too far? Who is able to decide based purely on instinct?



Who wants to continue living with such a great risk? There isn't even a pricing benefit, quite the contrary!

This is the future!

This is the installation:

The patented clamping process, i.e. position (at 8-15 mm or rotate with 16+22/26 mm flange)



and hit with the hammer – done.....



so in A2 + A4

It couldn't be any simpler!

In conclusion:

- Installation errors are prevented.
- Flange of the clamp is too thick?
– Simply rotate the beam clamp- perfect fit!
- Simple visual monitoring thanks to the strike marking.
- No damage caused by breaking of die-casting.
- Installation convenience with simple tools.
- Can be pre-installed on the floor.

This makes also it easy to install pipes, ventilation ducts, cable racks, window strips, profiled rails, wood and ceiling sub-structures as well as console brackets.

In this way, this beam clamp is a new innovative method of fixture.

Our motto: **"The master clamp bites and claws, where others crack!"**

PS: This product comes from the Black Forest region.

